



Main Features:-

- ◆ Full Port Ball Valve, 3 Pieces
- ◆ 1/4" to 4" PN63
- ◆ Socket Weld ends, ANSI B 16.11 Std
- ◆ Working Temperature -25 to +180C *
- ◆ Direct mounting ISO 5211

*Temperature and pressure determined by valve body, seat etc.



Suitable Applications & Approvals:



HVAC



OIL



GAS



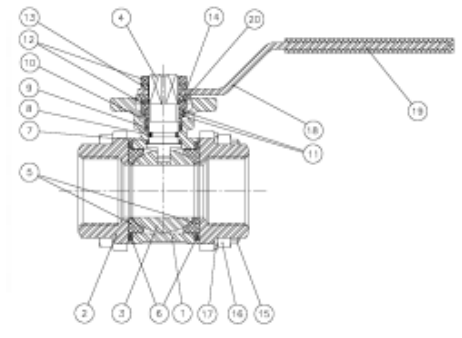
INDUSTRY

SERIES: 80023

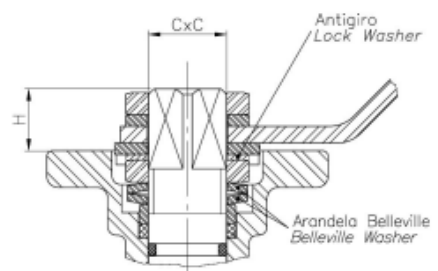
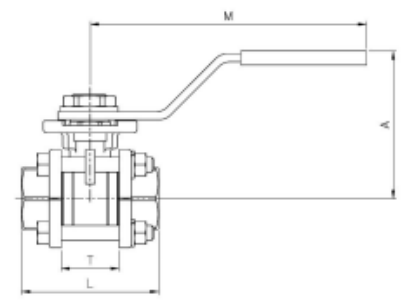
MANUFACTURER: **GENEBRE**

VALVE MATERIALS & DIMENSIONS

ITEM	SECTION	MATERIAL	ADDITIONAL INFO / OPTIONS
1	Ball	Stainless Steel 1.4408	Shot blasted
2	Cap	Stainless Steel 1.4408	Shot blasted
3	Ball	Stainless Steel 1.4408	Polishing
4	Stem	Stainless Steel AISI 316	Spare Part Code 2905
5	Ball Seat	PTFE + 15 GF	Spare Part Code 2820
6	Gasket	PTFE + Graphite	Spare Part Code 2820
7	Thrust Washer	PTFE + Graphite	Spare Part Code 2820
8	O Ring	FKM	Spare Part Code 2820
9	Stem Packing	PTFE	Spare Part Code 2820
10	Gland	AISI 304	n/a
11	Belleville Washer	AISI 301	n/a



REF	SIZE	PN	PORT	A	L	M	T	Kg
80023-02	1/4"	63	11	60	47.6	112	23	0.38
80023-03	3/8"	63	12.7	60	47.6	112	23	0.38
80023-04	1/2"	63	15	60	55	112	24	0.44
80023-05	3/4"	63	20	70	73	138	30	0.82
80023-06	1"	63	25	70	81	138	33.5	1.02
80023-07	1 1/4"	63	32	88	91	160	41.5	1.78
80023-08	1 1/2"	63	40	94	103	205	51.5	2.47
80023-09	2"	63	50	100	120	205	63	3.4
80023-10	2 1/2"	63	65	150	155	330	83.5	8.8
80023-11	3"	63	80	165	182	330	100	12.35
80023-12	4"	63	100	175	229	340	118.5	19.6



T +44 (0)1386 552369
 E sales@allvalves.co.uk

W www.allvalves.co.uk
 F +44 (0)1386

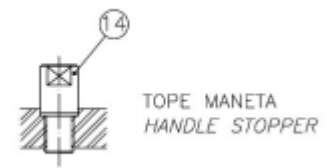
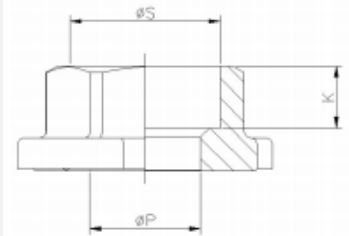


Genebre are a global brand of industrial valves with large stocks held for fast delivery on various type of valves, sizes, end connections and materials.

SERIES: 80023

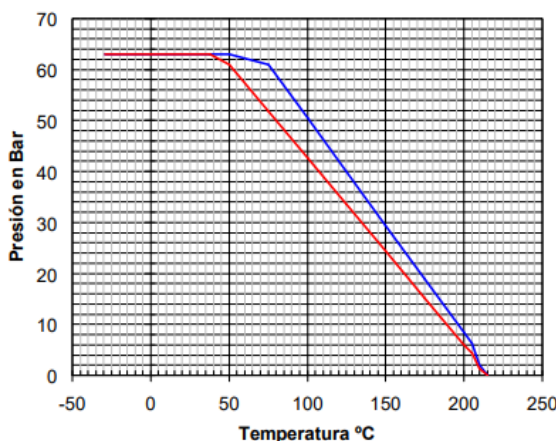
TORQUE / Kv VALUES / PRESSURE / PRESSURE & TEMP CHART

REF	SIZE	PN	H	CxC	ISO 5211	ØP	ØK	ØS	Butt Weld end
80023-02	1/4"	63	10	9x9	F03	11	10	14.1	
80023-03	3/8"	63	10	9x9	F03	12.7	10	17.6	
80023-04	1/2"	63	11	9x9	F03/F04	15	10	21.7	
80023-05	3/4"	63	11	11x11	F04/F05	20	14	27.1	
80023-06	1"	63	11	11x11	F04/F05	25	14	33.8	
80023-07	1 1/4"	63	15	14x14	F05/F07	32	15	42.6	
80023-08	1 1/2"	63	15	14x14	F05/F07	40	15	48.7	
80023-09	2"	63	15	14x14	F05/F07	50	19	61.1	
80023-10	2 1/2"	63	19	17x17	F07/F10	65	21	73.8	
80023-11	3"	63	19	17x17	F07/F10	80	24	89.8	
80023-12	4"	63	19	17x17	F07/F10	100	35	115.5	



REF	SIZE	TORQUE Nm	REF	SIZE	Kv	TORQUE :
80023-02	1/4"	4-5	80023-02	1/4"	6	- The liquid listed in the table are initial breakaway torques, taken with liquids and lubricant media.
80023-03	3/8"	4-5	80023-03	3/8"	12	- Please regard these as approximate values, as the objective value on different factors like pressure, medium, rubber
80023-04	1/2"	4-5	80023-04	1/2"	24	
80023-05	3/4"	7-8	80023-05	3/4"	43	
80023-06	1"	9-10	80023-06	1"	83	
80023-07	1 1/4"	12-14	80023-07	1 1/4"	130	
80023-08	1 1/2"	18-20	80023-08	1 1/2"	205	
80023-09	2"	28-30	80023-09	2"	340	
80023-10	2 1/2"	34-36	80023-10	2 1/2"	520	
80023-11	3"	58-60	80023-11	3"	1100	
80023-12	4"	90-95	80023-12	4"	1820	

PRESSURE AND TEMPERATURE CHART



GENEBRE

Genebre is a leading company and world reference in fluid control and high-quality taps. They control all the creation processes, responding to the specific needs of each market: from the initial concept and design of the product to the production and commercialization.



T +44 (0)1386 552369

E sales@allvalves.co.uk

W www.allvalves.co.uk

F +44 (0)1386